



· 杭州因达电炉有限公司

Hangzhou Yinda Induction Furnace Co., Ltd.

商务地址：浙江省杭州市钱江经济开发区顺凤路 欣北·钱江国际大厦3幢23楼  
Business Address: 23F, Building 3, Xinbei·Qianjiang International Mansion, Shunfeng Road,  
Qianjiang Economic Development Zone, Hangzhou City, Zhejiang Province  
电 话/Tel: 0571-86350882 传 真/Fax: 0571-86350885

· 广德因达电炉成套设备有限公司

Guangde Yinda Induction Furnace Complete Equipment CO.,LTD.

生产地址：安徽省广德经济开发区国安路38号  
Production Address: No. 38, Guoan Road, Guangde Economic Development Zone, Anhui Province  
电 话/Tel: 0563-6998555 传 真/Fax: 0563-6998567

邮箱/E-mail: yd@ifmcn.cn

官网/WEB: www.ifmcn.cn



杭州因达电炉有限公司

Hangzhou Yinda Induction Furnace CO.,LTD.

广德因达电炉成套设备有限公司

Guangde Yinda Induction Furnace Complete Equipment CO.,LTD.



质量铸就品牌 服务赢得信赖  
Quality Creates the Brand and Service Wins the Trust

· 此样本目录只是告诉您这里有推动您事业成功的产品与服务。同时欢迎您向我们索取具体的产品技术资料进一步了解产品信息。我们非常乐意以面谈的方式为您和您的公司同仁介绍我们所能提供的产品与服务。  
期待您的来电!

· This brochure alone show that we have something in store for your business success .How we concretely propose to do it si illustrated in detail in our product informa-tion publications which are available on demand.We will gladly elaborate on what we can do for you ang your company at a face to fance meeting.  
Shall we expect your call?

## 关于我们 ABOUT US

杭州因达电炉有限公司位于风光秀丽、交通便利的杭州市钱江经济开发区，是由浙江大学多年从事中频、高频、超音频等领域研发的专家、教授组成的，专业从事各种感应熔化、加热成套设备设计与制造的生产、服务性企业。本公司广泛与国内外科研院所合作，在以感应熔炼炉（10kg—70T）为主导产品的前提下，致力于研制制造感应加热、锻压透热、热处理、淬火、钎焊等热加工领域的成套设备。

因达电炉在2010年在引进、消化、吸收国外先进技术开发出国内先进的串联型双供电变频电源（俗称一拖二）。广泛应用于铸造行业，串联变频电源节能、效率高，谐波含量少。

主要产品有：

GW系列中频无芯感应熔炼炉10KG—70T；

GWBZ系列1—150T中频无芯感应保温炉；

KGPSII中频电源系列50—30000KW（24脉低谐波）；

其中KGPS型大功率中频电源12000KW—30000KW、24脉整流模式由本公司在国内率先研发成功，这些大功率电源目前主要用于熔炼，也非常适合大型金属（钢、铜、铝等）工件和型材（管、板、带、棒等）的升温加热。

因达电炉在2012年在浙、皖、苏三省交界处交通便利安徽省广德经济开发区投资兴建的生产基地广德因达电炉成套设备有限公司顺利投产，并于2014年通过ISO90001；2008质量管理体系认证和ISO14001；2004环境管理体系认证，同年年底被评为高新技术企业。

Hangzhou Yinda Electric Furnace Co., Ltd. is located at the scenic Qianjiang Economic Development Zone, Hangzhou City, with convenient transportation. Consisting of experts and professors of Zhejiang University who have been engaged in the R&D in the medium frequency, high frequency, super audio frequency and other field for many years, our company is a manufacturing and service type enterprise which specializes in the design and production of all kinds of complete induction melting and heating equipment. Our company widely cooperates with the scientific research institutions both home and abroad and is devoted to researching and producing the complete equipment in induction heating, forging heating, heating treatment, quenching, soldering and brazing and other hot working field on the premise of taking the induction furnace (10kg - 70T) as the leading product.

Yinda Furnace developed the domestic advanced series type dual power source variable-frequency power supply (known as one-to-two) after introducing, digesting and absorbing the foreign advanced technology. The power supply is energy-saving with less harmonic content and high efficiency and has been widely applied in the foundry industry.

Our main products are:

GW series medium frequency coreless induction furnace 10KG - 70T;

GWBZ series 1 - 150T medium frequency coreless induction holding furnace;

KGPSII medium frequency power supply series 50 - 30000KW (24 pulse low harmonic).

Among these, the KGPS type high-power medium frequency power supply 12000KW - 30000KW and the 24 pulse rectification mode are first developed successfully by our company in China, and now these high-power supplies are mainly used for smelting as well as the warming and heating of large metal work-pieces (steel, copper and aluminum, etc.) and profile (pipe, board, belt and stick, etc.).

In 2012, the production base, Guangde Yinda Furnace Complete Equipment Co., Ltd. which was invested and established by Yinda Furnace at the Guangde Economic Development Zone, Anhui Province at the junction of Zhejiang, Anhui and Jiangsu with convenient transportation was put into production successfully, passed the certification of the ISO90001:2008 Quality Management System and the ISO14001:2004 Environment Management System in 2014 and was rated the hi-tech enterprise by the end of the same year.



生产基地 / 广德

Production Base/Guangde



## 我们的团队 OUS TEAM

公司的主要技术管理人员都长期在中频感应熔炼炉领域从事技术和管理工作多年，在设备的设计、工艺、制造及管理方面都拥有极其丰富的经验，并在此基础上总结形成了对中频感应熔炼系统独特的理解和实现方式，拥有在产品设计中加以落实的能力。基于我们强大的技术实力，所有的产品都拥有自主知识产权，并获得了26项技术专利。

Main technical management personnel of our company have been engaged in the technical and management work in the medium frequency induction furnace field for a long time, own extremely rich experience in the equipment design, process, production, management and other aspects, and has formed the unique understanding and implementation model of the medium frequency induction furnace system on such basis, and boast the practicable ability of the product design. Based on our powerful technical strength, all of our products have possessed the proprietary intellectual property rights and have obtained 26 technical patents.

商务中心 / 杭州

Commercial Center/Hangzhou



## 我们的使命



在竞争如此激烈的当下，我们之所以能如此快速健康的发展，是因为基于许多共同的价值观和共同的原则。这些价值观和原则是我们满足用户需求和用户目标的基本保障，是确保公司健康发展、保持持续竞争力和长期成功的最好方式。不停的研发、不断的创新才能适应市场的变化，才能迎接来自新技术、能源和环境的冲击。

Nowadays under such fierce competition, we develop so rapidly and healthily because of our common value and principles which are the basic guarantee for us to meet the customers' needs and goals and the best way to ensure the healthy development of the company, and to keep the continuous competitiveness and the long-term success. Only with constant R&D and innovation can we adapt to the change of the market and resist the impact of the new technology, energy and environment.



我们清晰的认识到能源的紧缺与全球日益恶化的环境问题，我们更懂得能耗的降低给用户带来的实际效益，因此我们一直致力于开发和推广节能技术，这是我们义不容辞的责任与义务。

We clearly realize the shortage of energy and the increasingly worsening global environmental problems and we better understand the practical benefit brought by the reduction of energy consumption to the customers, therefore we have always been devoted to developing and promoting the energy-saving technology, which is our obligatory responsibility and duty.

公司员工和客户健康及设备的安全，是因达的重中之重。这做为因达不可割舍的价值观及最基本的准则一直指导着我们的日常决定和行动。

The health of our company staff and the customers and the safety of the equipment are the top priorities of Yinda, which have always guided our daily decisions and actions as the inseparable value and the most basic principle of Yinda.



质量铸就品牌，服务赢得信赖。

Quality Creates the Brand and Service Wins the Trust

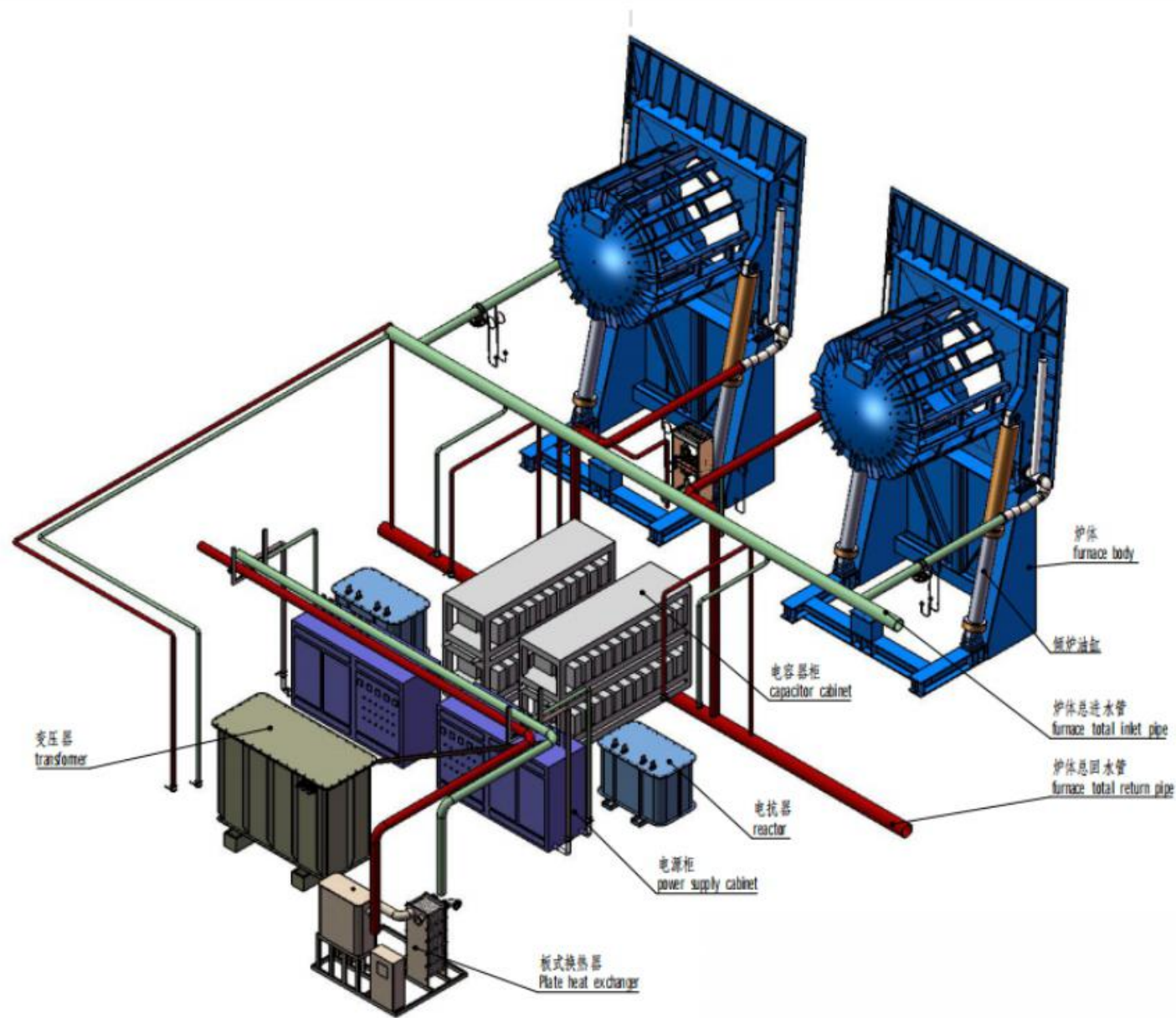
产品的质量和专业的服务是我们在市场上最强有力的说辞。我们相信不管市场怎样变化，客户对产品和服务的质量要求不会改变，客户永远愿意选择可靠的产品和及时专业的服务。

The product quality and professional service are our strongest proof in the market. We believe that no matter how the market changes, the customers' demand on the product and service quality will never change and the customers are willing to choose the reliable products and timely professional services all the time.



## 主营产品 Main Products

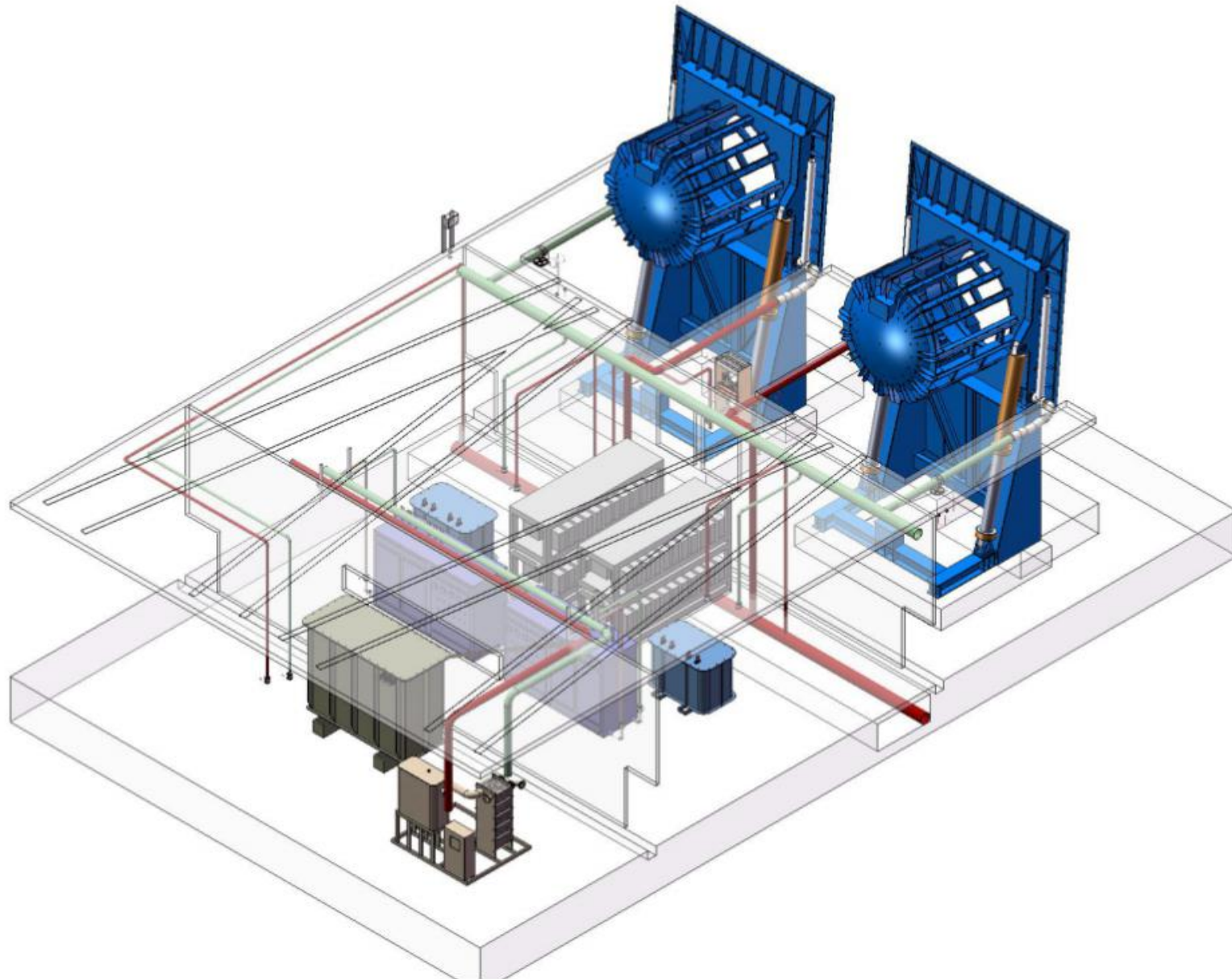
- 变频电源系列
- Variable-frequency power supply series
- 无芯（坩埚）感应熔炼炉系列
- Coreless (crucible) induction furnace series
- 无芯（坩埚）感应保温炉系列
- Coreless (crucible) induction holding furnace series
- 感应加热系列
- Induction heating series



中频感应熔炼系统现场布置示意图  
Schematic Diagram of the Site Layout of the Medium Induction Furnace System

### 中频感应熔炼系统现场布置示意图

Schematic Diagram of the Site Layout of the Medium Induction Furnace System



## 变频电源系列 A Variable-frequency power supply series A

### 1.KGPSII中频电源系列50—30000KW（24脉低谐波）

1.KGPSII medium frequency power supply series 50 - 30000KW (24 pulse low harmonic)  
 因主电路负载为并联谐振电路，所以大家习惯称之为并联电源。其中KGPSII型大功率中频电源12000KW—30000KW、24脉整流模式由本公司在国内率先研发成功，这些大功率电源目前主要用于冶炼，也非常适合大型金属（钢、铜、铝等）工件和型材（管、板、带、棒等）的升温加热。

本公司此设备具有以下优点：

- 1.符合国际、国内规范的电气安全设计标准。
- 2.高熔比率配置，快速熔炼，最具竞争力的低能耗指标。
- 3.电柜设计合理，控制线路采用互锁式，大大提高使用寿命及安全。
- 4.完善的安全保护功能：负载短路、开路、低频、缺水、过流、过压、错相、缺相……
- 5.大容量电源采用24脉，功率因数高，低谐波量。
- 6.采用一块线路板的全集成电路+数字控制线路，具有了抗干扰强、线形度好、调试简单、工作稳定。
- 7.导线铜排采用特殊处理，使的更节能和美观。

Since the main circuit load is the parallel resonant circuit, people are used to call it the parallel power supply. The KGPSII type high-power medium frequency power supply 12000KW - 30000KW and the 24 pulse rectification mode are first developed successfully by our company in China, now these high-power supplies are mainly used for smelting as well as the warming and heating of large metal work-pieces (steel, copper and aluminum, etc.) and profile (pipe, board, belt and stick, etc.).

This equipment of our company has the following advantages:

- 1.It meets the national and international formal electric safety design standard.
- 2.The high-melting rate configuration, rapid smelting, and the most competitive low energy consumption index.
- 3.The reasonably designed electric box and the interlock control wiring greatly improve the service life and safety.
- 4.The perfect safety protection function: load short circuit, open circuit, low frequency, water shortage, over current, overvoltage, phase dislocation, phase loss...
- 5.The 24 pulse large capacity power supply is of high power factor and low harmonic content.
- 6.The full integrated circuit with one piece of circuit board and the numerical control wiring make it work stably with strong anti-jamming and fine linearity and simple to debug.
- 7.The specially treated conducting copper busbar make it more energy saving and beautiful.

型号 Model	额定容量 Rated capacity (T)	额定功率 Fixed power (KW)	频率 Frequency (KHZ)	电源进线电压 Receive a line voltage(V)	整流模式 Rectification mode	熔比率 Melting rate(T/H)	变压器容量 Transformer capacity(KVA)	冷却水耗量 Water yield cooling down(T/H)
GW-0.05-100/2.5	0.05	100	2.5	380	6	0.17	120	5
GW-0.1-175/2.5	0.1	175	2.5	380	6	0.34	200	8
GW-0.15-220/2.5	0.15	220	2.5	380	6	0.41	250	8
GW-0.25-310/1	0.25	310	1	380	6/12	0.51	315	10
GW-0.5-400/1	0.5	400	1	380/690	6/12	0.95	400	15
GW-0.75-600/1	0.75	600	1	380/690	6/12	1.2	500	20
GW-1-800/1	1	800	1	380/690	6/12	1.5	800	25
GW-1.5-1200/0.7	1.5	1200	0.7	380/690	6/12	2	1290	35
GW-2-1800/0.7	2	1800	0.7	690/1000	6/12	2.6	1800	40
GW-3-2500/0.5	3	2500	0.5	690/1000	6/12	3.8	2500	50
GW-5-3600/0.5	5	3600	0.5	1000	6/12	6	3600	55
GW-8-5000/0.5	8	5000	0.5	1000	12	8	5000	70
GW-10-6000/0.5	10	6000	0.5	1000	12	9	6300	80
GW-12-9000/0.25	15	9000	0.25	1000	12	13	9000	130
GW-15-9000/0.25	15	9000	0.25	1000	12	13	9000	130
GW-20-12000/0.25	20	12000	0.25	1000	24	15	12000	180
GW-25-15000/0.25	25	15000	0.25	1000	24	18	15000	220
GW-30-16000/0.15	30	16000	0.15	1000	24	20	18000	280
GW-40-20000/0.15	40	20000	0.15	1250	24	30	23000	380
GW-50-24000/0.15	50	24000	0.15	1500	24	35	25000	480
GW-60-28000/0.15	60	28000	0.15	1500	24	40	30000	550
GW-70-30000/0.15	70	30000	0.15	1500	24	50	32000	650



功能：将多相工频交流电整流再逆变成单相中频电。

配置：根据功率大小，整流模式可设计为6脉整流、12脉整流、24脉整流。逆变模式可设计为单桥、双桥和四桥模式。

控制模式：有本地控制（按键控制、触摸屏控制）和远程控制（继电器控制和计算机控制）

\*铸造车间的金属粉尘特别多，建议冷却水路采用封闭式冷却塔。高端用户可选配计算机管理系统。

Function: Rectify the multiphase power frequency alternating current and then invert it into single-phase medium current.

Configuration: The rectification mode can be designed as 6 pulse rectification, 12 pulse rectification and 24 pulse rectification according to the power. The inversion mode can be designed as single-bridge, double-bridge and four-bridge mode.

Control mode: The local control (key control, touch screen control) and the remote control (relay control and computer control)

\* There is a particular number of metal dust in the foundry workshop, so it is suggested to use the closed cooling tower to cool the waterway. The high-end users may select and equip the computer management system.

中频电源控制线路采用全集成化线路，其中2项主要专利技术为：一种有源高压电子变压器（专利号：201420280467.1），一种有源高压电子变压器（专利号：201410232377.X），24脉中频电源柜主回路采用整流串联形式，谐波含量少，均流特性好。其中2项主要专利技术为：双隔离光控整流脉冲扩展电路（专利号：201420280539.2），双隔离光控整流脉冲扩展电路（专利号：201410232415.1）。

The control wiring of the medium frequency power supply adopts the full integrated circuit, thereinto there are 2 main patented technologies: the active high-voltage electronic transformer (patent No.: 201420280467.1) and the active high-voltage electronic transformer (patent No.: 201410232377.X). The main loop of the 24 pulse frequency power cabinet adopts the rectification series form with less harmonic content and fine uniform current distribution property, thereinto there are 2 main patented technologies: the double isolation light-control rectification pulse expanded circuit (patent No.: 201420280539.2) and the double isolation light-control rectification pulse expanded circuit (patent No.: 201410232415.1).





进线电压1250V以上的电源柜所使用的断路器为国内知名厂家生产的真空断路器,不存在普通空气断路器拉弧打火问题。电源柜内循环水路采用无碳胶管连接,较之普通的增强水管具有耐高温,耐电辐射热,弯曲性更好等特点,大大增加了其使用寿命。中频电源使用的电感为浇注式电感,此种电感虽已普遍使用,但技术为我公司首创,其专利为:一种中频电源用浇注式电感(专利号:201420280428.1)一种中频电源用浇注式电感(专利号:201410232308.9)电源柜内部链接铜排为T2导电铜排,均经过喷砂钝化处理,不仅美观,且抗氧化。

The circuit breaker used in the power cabinet with an inlet voltage above 1250V is the vacuum circuit breaker that is produced by a well-known domestic manufacturer and has no arcing problem. The circulating waterway in the power cabinet adopts the carbon-free rubber hose to connect, which has the characteristics of heat resistance, electric heat radiation resistance and better folding flexibility, etc. compared with the ordinary enhanced water pipe, greatly increasing the service life. The medium frequency power supply uses the pouring inductance which is generally used but the technology is initiated by our company, the patent is: the pouring inductance used by the medium frequency power supply (patent No.: 201420280428.1) and the pouring inductance used by the medium frequency power supply (patent No.: 201410232308.9). The internal linked copper busbar in the power cabinet is the T2 conducting red copper busbar which is beautiful and antioxidant through the sand blasting and passivating treatment.



· 电源柜同时可选配有熔炼监控管理系统。PLC和人机界面组成了一个方便操作的管理监控系统,功能包括:启动,故障诊断,故障信息显示和存储,运行信息显示,系统状况显示等,便于设备维护,也为生产一线管理提供及时有效的数据。  
· Meanwhile, the power cabinet may select and equip the smelting monitoring management system. The PLC and the human-computer interface forms a management monitoring system which is easy to operate and convenient for equipment maintenance and provides timely and effective data for the first production line management, the functions include: starting, fault diagnosis, fault information display and storage, operation information display and system status display, etc.



电加热电容器单台容量大、介质损耗低、电容器柜体积小、发热少、安全可靠。补偿电容器柜中所使用的水冷母排也为T2导电铜排,其上的冷却水管为母排制作时一体挤压而成,使其散热效果更强。

The single electric heating capacitor is of large capacity and low dielectric loss. The capacitor cabinet is safe and reliable with small size and less heat. The water-cooling busbar used in the compensating capacitor cabinet is also the T2 conducting red busbar, and the cooling water pipe above it is extruded at the time of making the busbar, enhancing the heat dissipation effect.







油浸式电抗器  
Oil-immersed reactor

滤波电抗器采用油浸式电抗器采用单位到点载面低于 $1A/mm^2$ 的绕制方式，其最大的特点为低能耗，免维护，不受现场环境制约，电源室内温度和噪音大大降低。其运用到的专利有：由多圈相互绝缘铜箔构成的大容量电抗器（专利号：201220092392.5）

The filter reactor adopts the oil-immersed reactor and the winding way with the unit point-to-point carrier surface less than  $1A/mm^2$ . The most important characteristics are low energy consumption, maintenance free, unaffected by the field environment and great reduction of the temperature and noise in the power supply room. The patented applied here is: large-capacity reactor formed by multi-circle mutual-insulated copper foil (patent No.: 201220092392.5).



普通水冷电抗器  
Ordinary water-cooling reactor



## 变频电源系列B Variable-frequency series B KGPS-CL双供电系列中频电源

### KGPS-CL dual power source series medium frequency power supply

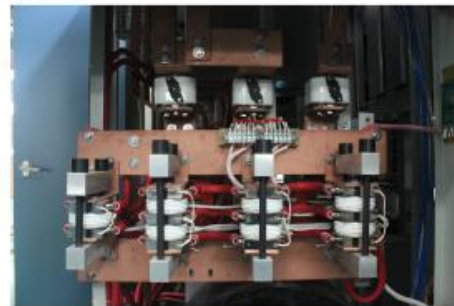
因主电路负载为串联谐振电路，所以大家习惯称之为串联电源，俗称“一拖二”。该装置有以下特点：

- 1) 电源采用串联逆变电源。
- 2) 具有双供电性能，即：一台电源可同时向两台炉体供电，功率大小可以在两台炉子之间自由分配，特别适用于铸造厂浇铸保温和熔炼工艺。
- 3) 电源转换效率相对较高，功率因数高，高次谐波小。
- 4) 该电源可方便的实现一拖三、一拖四等一拖多感应炉系统。
- 5) 电源控制面板简洁明了，易于操作。
- 6) 数字化的电子控制，全部触发信号通过光纤传输，模块化设计装配。
- 7) 选用国内外知名品牌元器件，先进规范的安装、检验、调试工艺。
- 8) 合理的布局，方便维护。

Since the main circuit load is the parallel resonant circuit, people are used to call it the parallel power supply, which is known as "one-to-two". The device has the following characteristics:

1. The power supply adopts the series inverted power.
2. It boasts the dual power source property, namely, one power supply can serve two furnace bodies at the same time and the power can be freely distributed between the two furnaces, making it especially suitable for the pouring insulation and the smelting process in the foundry plant.
3. The power conversion efficiency is relatively higher. The power factor is high and the high-order harmonic is low.
4. The power supply can easily realize one-to-three, one-to-four and other one-to-more induction furnace system.
5. The control panel of the power supply is simple, clear and easy to operate.
6. The numerical electronic control; all the trigger signals are transmitted through the optical fiber; the modularized design and assembly.
7. The application of components and parts of well-known domestic and foreign brands and the advanced and formal installation, inspection and debugging process.

型号 Model	额定功率 Fixed power (KW)	频率 Frequency (KHZ)	电源进线电压 Receiver line voltage(V)	整流模式 Rectification mode	炉体电压 Furnace voltage(V)	直流电压 DC voltage(V)	直流电流 DC current(A)	变压器容量 Transformer capacity(KVA)
KGPS-CL-250	250	2	380	3	1800	500	500	300
KGPS-CL-500	500	1.5	380	3	2000	500	1000	500
KGPS-CL-800	800	0.7	575	6	2300	750	1070	800
KGPS-CL-1250	1250	0.5	575	6	2900	750	1670	1250
KGPS-CL-1500	1500	0.4	575	6	2900	750	2000	1600
KGPS-CL-2250	2250	0.35	575	6	2900	750	3000	2500
KGPS-CL-3000	3000	0.3	575	6	2900	750	4000	3500
KGPS-CL-3750	3750	0.3	575	6	2900	750	5000	4000
KGPS-CL-4500	4500	0.3	575	6	2900	750	6000	4750
KGPS-CL-5250	5250	0.3	575	6	2900	750	7000	5500
KGPS-CL-6000	6000	0.3	575	6	2900	750	8000	6300
KGPS-CL-8000	8000	0.25	575	6	2900	750	10700	8500
KGPS-CL-10000	10000	0.2	660	6	3500	870	11500	12000





电炉的能量转换核心——感应圈由坚实、耐用、高导电的无氧铜管正反双绕制成型，确保半炉钢水就能大功率输出，提高总体效率，使炉衬温度梯度均匀，延长炉衬使用寿命。本公司率先研发的感应圈阶梯式绕制法，此绕制方法为我公司专利技术，发明专利名称为：大功率无芯感应熔炼炉线圈绕制方法（专利号：201410229369.X）。经过多家客户实地使用验证，得到客户一致好评。铜管对接处采用银基钎料焊材焊接。先进的绕制方法配合高导电率铜管及对接处的银焊处理，极大的保证了感应圈的高节能性。感应圈线圈经过喷砂钝化等一系列处理后，采用德国进口高温绝缘漆喷涂三道处理，完全解决了传统感应圈线圈间打火问题。另外感应器水冷圈与有效线圈间通过采用国外先进技术处理，彻底解决了传统感应器水冷圈与有效线圈间的放电打火问题。

The core of the energy conversion of the furnace – the induction coil is doubly wound by the firm, durable and highly-conductive oxygen-free copper tube forward and backward to ensure that half of the furnace of the liquid steel can produce high power output, improve the overall efficiency, balance the furnace lining temperature gradient and extend the service life of the furnace lining. The stepwise induction coil winding method first developed by our company is the patent technology of our company, and the patent name is: high-power coreless induction furnace coil winding method (patent No.: 201410229369.X). Through the field use verification of many customers, it has obtained the consistent praise of the customers. The copper tube joint adopts the silver-based brazing filler metal welding material to weld. The advanced winding method combined with the high-conductivity copper tube and the silver welding treatment at the joint greatly guarantees the high energy saving property of the inductor.

After a series of sand blasting and passivation treatment, etc., the inductor coil is to go through three times of spray coating treatment of the heat-resistance electric insulating paint imported from Germany, completely solving the arcing problem between the traditional inductor coils. Besides, through adopting the foreign advanced technology, the discharging and arcing problems between the traditional inductor water-cooling coil and the active coil have been completely solved.

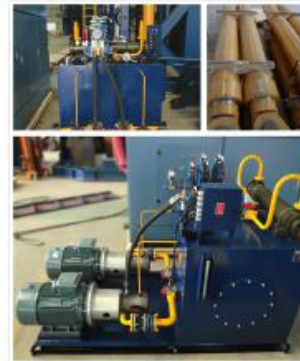


磁轭采用高导电率冷轧硅钢片制造。磁通密度设计在6000高斯以下。磁轭采用仿形无穿杆结构，其内弧面的弧度与感应线圈的外圆弧度相同，使磁轭可以紧贴感应线圈外侧，最大限度的约束线圈向外发散的磁场，减少外磁路磁阻，无穿杆结构有效的增加了导磁截面。

磁轭由两侧的304不锈钢板和304不锈钢夹件支持，焊接固定。不锈钢夹板加大口径的水槽设计有效的遏制磁轭过热现象，其水槽管可以承受0.8MPa水压，15min内无泄漏。

The magnet yoke adopts the high-conductivity cold-rolled silicon steel sheet. The magnetic flux density is designed below 6000 gauss. The magnet yoke adopts the copying wear rod free structure. The radius of the intrados is the same as the ex-circle radius of the induction coil, making the magnet yoke cling to the outside of the induction coil, furthest restrain the divergent magnetic field of the coil and reduce the external magnetic circuit resistance. The wear rod free structure effectively increases the permeability section.

The magnet yoke is held by the 304 stainless steel plate and the 304 stainless steel clamps on both sides and welded to fix. The stainless steel plate increases the water channel design of the mouth and effectively stops the overheating phenomenon of the magnet yoke. The water channel pipe can bear 0.8MPa water pressure and will not leak within 15 minutes.



### Hydraulic System

1. The hydraulic system is composed of the hydraulic station, hydraulic cylinder and the hydraulic operation platform;
2. The hydraulic station is a hydraulic system composed of the box, hydraulic pump, various valves and pressure instruments. The tilting, stopping and resetting of the furnace body are realized through the operation of the buttons and the handles on the hydraulic operation platform;
3. The furnace body can tilt 95 degrees through the pushing of the hydraulic cylinder to pour out all the molten metal and stop at any location during the tilting process as needed;
4. The main pump adopts the plunger pump;
5. The oil outlet and the oil return inlet are equipped with the filters;
6. The hydraulic system and the fuel tank are executed strictly in accordance with the national industrial standard;
7. The hydraulic system applies that of famous domestic and foreign supporting manufacturers.



### 液压系统

1. 液压系统由液压站、液压缸及液压操作台组成；
2. 液压站是由箱体、液压泵、各种阀门及压力仪表组成的液压系统。通过液压操作台上的按钮和手柄实现炉体的倾翻、停止、复位；
3. 炉体通过液压缸的推动可以倾翻95度，倒出全部金属液，并可根据需要在倾转过程中的任意位置停留；
4. 主泵采用柱塞泵；
5. 出口回油口装过滤器；
6. 液压系统和油箱严格按国家行业标准执行。
7. 液压系统选用国内外著名配套厂家。

### 无芯（坩埚）感应保温炉系列

Coreless (crucible) induction holding furnace series

GWBZ系列中频无芯感应保温炉

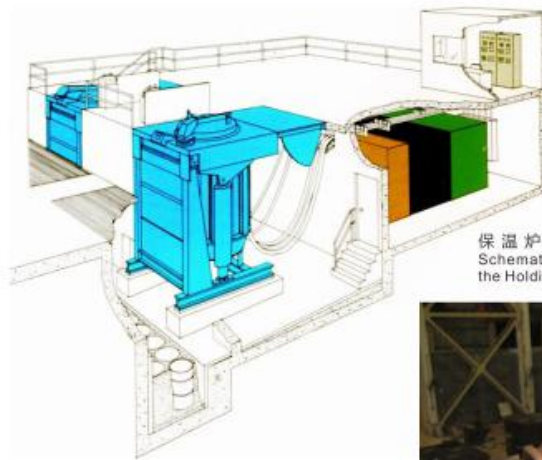
GWBZ series medium frequency coreless induction holding furnace

这类产品主要用于钢（铁）水的保温和提温。来自其他熔炼设备（如高炉、转炉、冲天炉）的钢（铁）水，倒入保温感应炉中，再微调成分，并适当提温至最终浇铸温度。

This kind of products are mainly used for the heat preservation and raising of the molten steel (iron). Pour the molten steel (iron) from other smelting equipment (such as the blast furnace, converter and the cupola) into the holding induction furnace, conduct fine tuning of the ingredients and then properly raise the temperature to the final pouring temperature.

感应保温炉标准配置及主要参数:

额定 容积 Rated capacity ( t )	额定 功率 Rated power ( KW )	额定 频率 Rated frequency ( HZ )	变压器配置 Transformer configuration		整流 脉数 pulses	感应器 电压 Coil voltage ( V )	熔化率 (1600℃) Melting rate ( t/h )	电耗 Energy consumption ( kWh/t )
			容量 Capacity ( KVA )	二次电压 Secondary voltage ( V )				
10	1000	500	1250	3φ690V	6	2400	2.5	53
20	1800	250	2000	3φ690V	6	2400	2.8	50
40	4500	150	5000	6φ1000V	12	3200	3	47
80	9000	100	2×5000	2×6φ1000V	24	3200	3	45
100	11000	100	2×6300	2×6φ1000V	24	3200	3	45



保温炉现场示意图  
Schematic Diagram of  
the Holding Furnace Site



保温炉用户现场  
The Customer Using Site  
of the Holding Furnace

### 感应加热炉系列 Induction Heating Furnace Series

#### 1. 钢厂方坯连铸连轧在线补温感应加热炉

The continuous casting and rolling of the blank from the steel plant, and the online temperature compensation induction heating furnace

#### 2. 金属管道、棒、线材等生产线在线感应加热

The online induction heating of the metal pipe, stick, wire rod and other production line

#### 3. 铜/铝锭感应加热炉系列

The copper / aluminum ingot induction heating furnace series

#### 4. 感应淬火炉系列

The induction quenching furnace series

感应热处理炉适用于各种金属原材料（如钢管、板坯、棒料）的加工前的加热，如弯管、板坯轧制、棒料锻打冲压等。对于各种金属零件（如轴承、齿轮）的热处理，可明显改善产品质量（如提高耐磨性和韧性）。

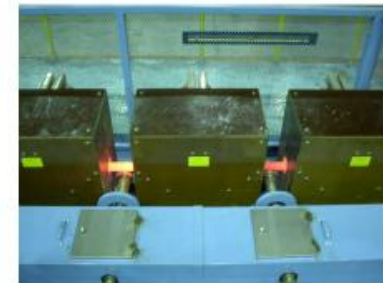
感应加热方式的能量密度可以设计的非常高，对于中小型零件，可以在数秒内，将工件整体或局部快速升温至1200℃以上，因此是传统的燃气炉、燃油炉、电阻炉所无法比拟的，同时兼有自动化程度高、环保性好的优点。

- 棒料透热（用于锻压成型）
- 管件透热（用于表面喷涂或弯管）
- 板材的退火和回火
- 坯料轧制或挤压前的透热
- 小型零部件的局部加热

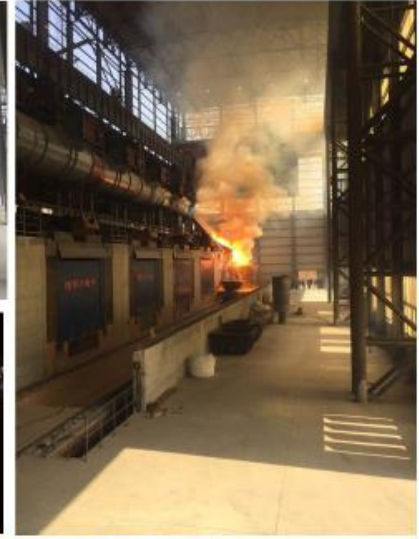
The induction heat treatment furnace is applicable to heating of all kinds of raw metal materials (such as the steel plate, plate blank and bar material) before processing, like the plate bending, the rolling of the plate blank and the forging and stamping of the bar materials, etc. The heat treatment of all kinds of metal parts (such as the bearings and the gears) can significantly improve the product quality (e.g. improve the abrasive resistance and the tenacity).

The energy density of the induction heating method can be designed very high. For the medium and small-sized parts, the temperature of the whole or part of the work-piece can be rapidly raised to above 1200℃, so it cannot be matched by the traditional gas furnace, oil furnace and the resistance furnace. In addition, it has the advantages of high-automation degree and being environmental.

- Heating of the bar materials (used for forging molding)
- Heating of the pipe fittings (used for surface spraying or tube bending)
- Annealing and tempering of the sheet materials
- Heating before the rolling or extruding of the blank
- Partial heating of the small-sized parts



# 现场Worksite



同时我们也提供……  
At the same time, we also provide...



整流变压器

Rectification transformer



加料小车

Charging dolly



筑炉工具

Furnace building tools



# WHAT WE THINK

IS FOR CUSTOMER NEEDS 客户所需 我们所想



公司领导与伊朗客户签订合同  
The company leader signed a contract with the Iranian customer



公司领导与利比亚客户技术交流  
The company leader conducted a technical exchange with the Libyan customer



公司领导与沙特客户技术交流  
The company leader conducted a technical exchange with the Saudi Arabia customer



公司领导与德国客户技术交流  
The company leader conducted a technical exchange with the Germany customer



公司领导与德国客户技术交流  
The company leader conducted a technical exchange with the Germany customer



公司领导与客户技术交流  
The company leader conducted a technical exchange with the Chinese customer



公司领导与客户技术交流  
The company leader conducted a technical exchange with the Chinese customer

## 为什么选择因达电炉？

### Why to choose Yinda Furnace?

1. The competitive power consumption index and melting rate
2. The stable and excellent system control
3. The leading design, manufacturing and process level
4. Conform to the international safety design standard
5. Excellent power supply and coil design
6. The senior engineering design and construction team
7. The humanized and efficient after-sales service system

1. 极具有竞争力的电耗指标和熔化率
2. 稳定、优异的系统控制
3. 领先的设计、制作、工艺水平
4. 符合国际规范的安全设计标准
5. 优异的电源和线圈设计
6. 资深的工程设计、施工团队
7. 人性化及高效的售后服务体系